

FLOAT AND THERMOSTATIC STEAM TRAPS

UniAdca FS 32H

(High Capacity)

DESCRIPTION

UniAdca FS 32H complete stainless steel, maintenance free sealed float and thermostatic (integral air vent) steam traps series are designed for all types of low and medium pressure steam heating and process equipment.

Typical applications include unit heaters, heat exchangers, driers, jacketed vessels and all the applications where continuous drainage is essential. These traps fits the CX40 UniAdca connectors.

MAIN FEATURES

Modulating discharge.

Discharges condensate at steam temperature.

Unaffected by sudden or wide load and pressure changes.

Excellent air discharge (by thermostatic air vent).

OPTIONS: Equalizing plug ,venting connection and drain plug (or blow-off valve on body).

USE : Saturated and superheated steam.

AVAILABLE

MODELS : FS 32H-4.5 - FS 32H-10 - FS 32H-14.

SIZES : DN1" -25 simple and duplex connectors and DN11/2"-40 duplex connectors only. According to the pipeline connector. See IS 1.0910 and IS 1.0915

INSTALLATION : Always in a horizontal plane with the plug pointing downwards.

See IMI installation and maintenance instructions.

PMA :Max.allowable pressure 40 bar

TMA: Max.allowable temperature 400 °C

PMO: Max.operating pressure 14 bar

TMO: Max.operating temperature 235 °C

How to order:

-Steam trap : FS 32H (Float and thermostatic steam trap).

-Pipe connector :

-CX40SS DN 1" or DN25 (Stainless steel pipe connector)

-CX402SS DN 1" or DN25 (Stainless steel duplex pipe connector)

-CX402SS DN 11/2" or DN 40 (Stainless steel duplex pipe connector)

-The complete set :

FS32HXSS DN 1" or DN25 (Stainless steel connector CX40SS DN 1"-DN25 plus FS32H steam trap)

FS32HX2SS DN 1" or DN25 (Stainless steel duplex connector CX402SS DN1"-DN25 plus two FS32H steam traps)

FS32HX2SS DN 11/2" or DN40 (Stainless steel duplex connector CX402SS DN 11/2"-DN40 plus two FS32H steam traps)

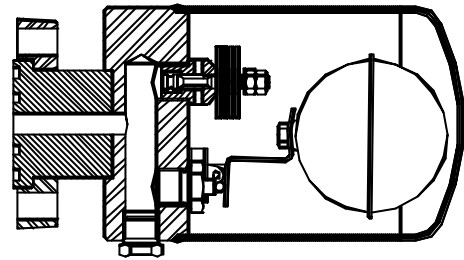
FLOW RATE CAPACITY IN Kg/h

MODEL SIZE	DIFFERENTIAL PRESSURE (bar)												
	0.5	1	1,5	2	3	4,5	6	7	8	9	10	12	14
FS32H-4,5 1"	900	1250	1450	1700	2010	2400							
FS32H-10 1"	390	550	675	790	900	1000	1200	1300	1400	1500	1590		
FS32H-14 1"	250	350	430	500	590	680	800	850	900	950	1000	1000	1150

Remarks : Duplex traps has twice the capacity.

VALSTEAM ADCA

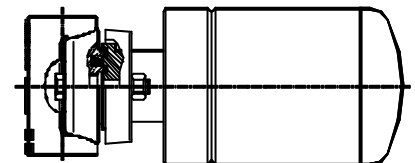
We reserve the right to change the design and material of this product without notice.



MATERIALS:

Austenitic stainless steel throughout

Weight - 8,7 Kgs



Steam trap plus pipe connector
 (See IS 1.0965 and IS 1.0970)

Max.differential pressure

FS 32H-4.5 - 4.5 bar

FS 32H -10 - 10 bar

FS 32H- 14 - 14 bar