



STEAM EQUIPMENT

BIMETALLIC STEAM TRAP UniAdca BSR 22 (With external regulation)

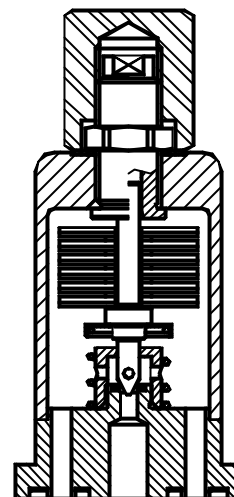
DESCRIPTION

UniAdca BSR 22 complete stainless steel, maintenance free series sealead bimetallic steam traps and air eliminators are simple and robust traps, recommended for steam tracing applications and where condensate sensible heat can be recovered.

These traps fits the CX40 UniAdca connectors.

MAIN FEATURES

External adjustment device
Modulating discharge.
Discharges condensate below steam temperature.
Excellent air discharge.
Operates on superheated steam.
Unaffected by waterhammer and vibrations.



OPTIONS: Sealead non-adjustable regulator.
USE: Saturated and superheated steam.
AVAILABLE
MODELS: BSR 22
SIZES: DN 1/2" , 3/4" and 1" - DN 15 , 20 and 25.
According to the selected pipeline connector .
See IS 1.0910
INSTALLATION: In any position .
See IMI installation and maintenance instructions.

MATERIALS

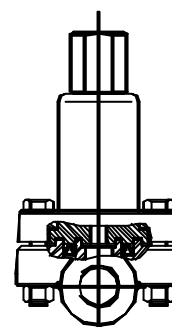
Body : Austenitic stainless steel
Regulator : Bimetallic
Valve : Hardned stainless steel
Seat : Stellited

Weight - 0,8 Kgs

PMA:Max.allowable pressure 80 bar
TMA:Max.allowable temperature 425 °C
PMO:Max.operating pressure 22 bar
TMO:Max.operating temperature 400 °C

How to order:

- Steam trap : BSR 22 (Bimetallic steam trap with external regulator).
- Pipe connector :
- CX40S DN ... (Forged steel pipe connector)
- CX40SS DN ... (Stainless steel pipe connector)
- The complete set :
- BSR22XS DN ... (Steel pipe connector CX40S plus BSR22 steam trap)
- BSR22XSS DN...(Stainless steel pipe connector CX40SS plus BSR22 steam trap)



Steam trap plus pipe connector
(See IS 1.0915)

FLOW RATE CAPACITY IN Kg/h

| MODEL | SIZE | DIFFERENTIAL PRESSURE (bar) | | | | | | | | | | | | |
|--------|-----------|-----------------------------|-----|-----|-----|-----|-----|-----|-----|-----|-----|-----|-----|-----|
| | | 0.5 | 1 | 2 | 4 | 6 | 8 | 10 | 12 | 14 | 16 | 18 | 20 | 22 |
| BSR 22 | 1/2"-1" A | 25 | 55 | 70 | 85 | 90 | 95 | 100 | 102 | 104 | 105 | 107 | 108 | 110 |
| BSR 22 | 1/2"-1" B | 60 | 140 | 175 | 210 | 225 | 240 | 250 | 255 | 260 | 265 | 267 | 270 | 273 |

A = Condensate discharge at 10°C below saturation temperature. B = Cold water capacity at about 20°C .

VALSTEAM ADCA

We reserve the right to change the design and material of this product without notice.



Produced in accordance with Article 3, paragraph 3 of the PED - European Pressure Equipment Directive - 97/23/EC.
Produzido em conformidade com o Artigo 3º, parágrafo 3 da PED -Directiva Europeia 97/23/EC (Decreto-Lei 211/99) .

IS 1.0955 E 10.04