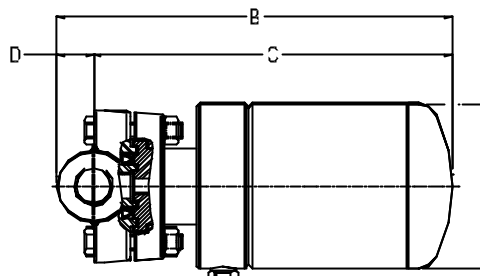


## UNIADCA PIPELINE CONNECTORS PLUS STEAM TRAPS Dimensions and weights

### FS32XS and FS32XSS

#### DIMENSIONS (mm)

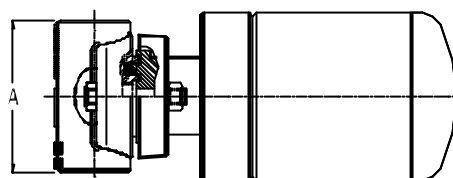
Screwed Ends							DIN Flanges	
SIZE	A	B	C	D	E	WEIGHT	F	WEIGHT
DN	Kg						Kg	
1/2"	80	212	193	19	90	3,9	150	5,5
3/4"	80	212	193	19	90	3,9	150	6,2
1"	80	222	198	24	90	4,5	160	7,2



### FS32HXS and FS32HXSS

#### DIMENSIONS (mm)

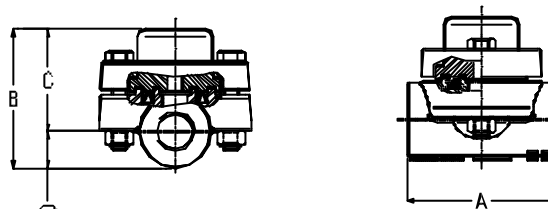
Screwed Ends							DIN Flanges	
SIZE	A	B	C	D	E	WEIGHT	F	WEIGHT
DN	Kg						Kg	
1"	80	285	261	24	142	9,3	160	12



### TS22XS and TS22XSS

#### DIMENSIONS (mm)

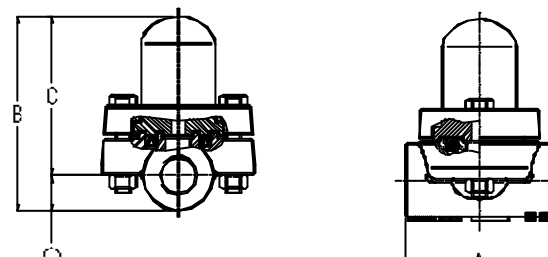
Screwed Ends						DIN Flanges		
SIZE	A	B	C	D	WEIGHT	F	WEIGHT	
DN	Kg						Kg	
1/2"	80	74	55	19	1,6	150	3,2	
3/4"	80	74	55	19	1,6	150	3,9	
1"	80	84	60	24	2,2	160	4,9	



### BS22XS and BS22XSS

#### DIMENSIONS (mm)

Screwed Ends						DIN Flanges		
SIZE	A	B	C	D	WEIGHT	F	WEIGHT	
DN	Kg						Kg	
1/2"	80	105	86	19	1,8	150	3,4	
3/4"	80	105	86	19	1,8	150	4,1	
1"	80	115	91	24	2,4	160	5,1	



### BSR22XS and BSR22XSS

#### DIMENSIONS (mm)

Screwed Ends						DIN Flanges		
SIZE	A	B	C	D	WEIGHT	F	WEIGHT	
DN	Kg						Kg	
1/2"	80	145	126	19	2	150	3,6	
3/4"	80	145	126	19	2	150	4,3	
1"	80	155	131	24	2,6	160	5,3	

