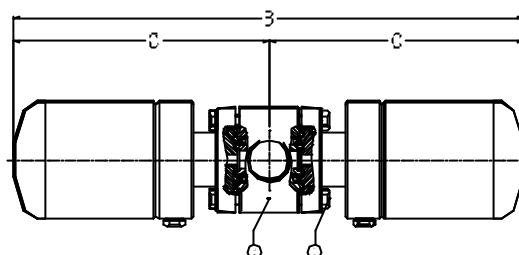


UNIADCA PIPELINE CONNECTORS PLUS STEAM TRAPS Dimensions and weights (Duplex design)

FS32X2S and FS32X2SS

DIMENSIONS (mm)

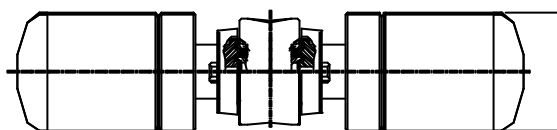
Screwed Ends					DIN Flanges	
SIZE	B	C	E	WEIGHT	F	WEIGHT
DN					Kg	Kg
1"	394	197	90	7,5	160	10



FS32HX2S and FS32HX2SS

DIMENSIONS (mm)

Screwed Ends					DIN Flanges	
SIZE	B	C	E	WEIGHT	F	WEIGHT
DN					Kg	Kg
1"	522	261	142	17,5	160	20
1 1/2"	534	267	142	19	230	24



TS22X2S and TS22X2SS

DIMENSIONS (mm)

Screwed Ends					DIN Flanges		
SIZE	A	B	C	D	WEIGHT	F	WEIGHT
DN					Kg	Kg	
1"	80	120	60	--	2,9	160	5,5

