

FLOAT AND THERMOSTATIC STEAM TRAPS FLT 32 (Steel DN1/2"-1" ; DN 15-DN25)

DESCRIPTION

FLT 32 float and thermostatic (integral air vent) steam traps series are designed for all types of low and high pressure steam heating and process equipment.

Typical applications include unit heaters, heat exchangers, driers, jacketed vessels and all the applications where continuous drainage is essential. Connections are female screwed or flanged for horizontal or vertical installation.

MAIN FEATURES

- Modulating discharge.
- Discharges condensate at steam temperature.
- Unaffected by sudden or wide load and pressure changes.
- Excellent air discharge (by thermostatic air vent).

- OPTIONS:**
- Internal strainer (only on horizontal models).
 - SLR - steam lock release .
 - Equalizing plug and venting connection.

USE : Saturated and superheated steam.

AVAILABLE

MODELS : FLT 32-4.5 - FLT 32-10 - FLT 32-14 - FLT32-21.

SIZES : 1/2", 3/4", 1" - DN15, DN20, DN 25.

CONNECTIONS : Female screwed ISO 7/1 Rp (BS21)
Flanged DIN. Special flanges upon request.

INSTALLATION : Standard horizontal installation -
flow from right to left FLT32 (R-L)

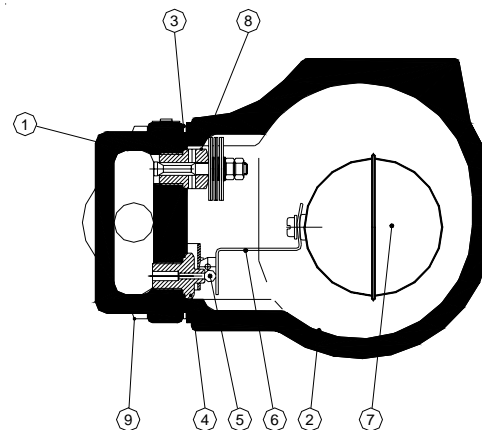
Upon request:

- horizontal installation with the flow from left to right FLT32 (L-R)
- vertical installation with the flow from top to bottom FLT32 (V)

See IMI, installation and maintenance instructions.

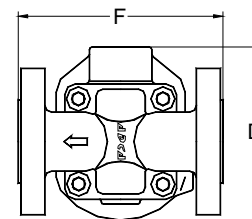
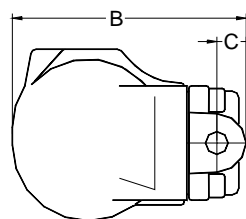
PMA :Max.allowable pressure 40 bar
TMA: Max.allowable temperature 400 °C
PMO: Max.operating pressure 32 bar
TMO: Max.operating temperature 250 °C

How to order: i.e. FLT32-21 DN 15 DIN.

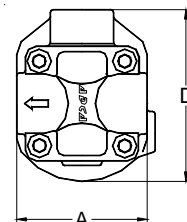

MATERIALS:

POS.NR.	DESIGNATION	MATERIAL
1	BODY	C22.8
2	COVER	GS C-25
3 *	GASKET	NON ASBESTOS
4 *	SEAT	AISI 410
5 *	VALVE	AISI 410
6 *	LEVER	AISI 304
7 *	FLOAT	AISI 304
8 *	AIR VENT	STAINLESS STEEL
9	BOLTS	STEEL 8.8

* AVAILABLE SPARE PARTS


DIMENSIONS (mm)

SIZE	Screwed Ends				WEIGHT	DIN Flanges		
	A	B	C	D		F	WEIGHT	
DN							Kg	Kg
1/2"	95	178	23	128	5,2	150	6,7	
3/4"	95	178	23	128	5,2	150	7,2	
1"	95	178	23	128	5,2	160	7,7	


FLOW RATE CAPACITY IN Kg/h

MODEL	SIZE	DIFFERENTIAL PRESSURE (bar)														
		0,5	1	1,5	2	3	4,5	6	7	8	9	10	12	14	16	21
FLT32-4,5	1/2"- 1"	230	330	400	440	535	630									
FLT32- 10	1/2"- 1"	150	200	250	280	340	400	460	495	520	550	595				
FLT32-14	1/2"- 1"	120	150	190	220	260	320	380	400	425	440	480	510	550		
FLT32-21	1/2"- 1"	60	80	90	115	135	160	190	200	220	230	240	260	270	290	300

Max.differential pressure
 FLT 32-4.5 - 4.5 bar
 FLT 32 -10 - 10 bar
 FLT 32- 14 - 14 bar
 FLT 32- 21 - 21 bar

Recommended safety factor : continuous 1.2 - 1.5 ; discontinuous flow 2 - 3 .