

## FLOAT AND THERMOSTATIC STEAM TRAPS FLT 50 & FLT 65 S ( Fabricated Steel ) ( DN50 - DN100 )

**DESCRIPTION**

FLT 50 S float and thermostatic (integral air vent) high capacity steam traps series are designed for all types of low and medium pressure steam heating and process equipment. Connections are flanged .

**MAIN FEATURES**

Modulating discharge.  
Discharges condensate at steam temperature.  
Unaffected by sudden or wide load and pressure changes.  
Excellent air discharge (by thermostatic air vent).

**OPTIONS:** Equalizing plug ,venting connection and drain plug ( or blow-off valve on cover).  
**USE :** Saturated steam.

**AVAILABLE MODELS :**

FLT 50 S & FLT 65 S-12 - steel construction  
FLT 50 SS & FLT 65 SS-12 - stainless steel

**SIZES :**

FLT 50 - DN 50 and DN 65.  
FLT 65 - DN 65, 80 and DN 100.

**CONNECTIONS :** Flanged DIN.Special flanges upon request.

**INSTALLATION :** Horizontal installation .  
Vertical inlet - horizontal outlet.

How to order: i.e. FLT50 S DN 65 DIN

PMA :Max.allowable pressure 16 bar  
TMA: Max.allowable temperature 300 °C  
PMO: Max.operating pressure 12 bar  
TMO: Max.operating temperature 250 °C  
Max.differential pressure 12 bar

**DIMENSIONS ( mm )**

		DIN FLANGES							
MODEL	SIZE	A	B	C	D	E	F	G	WEIGHT
FLT 50	50-65	430	350	263	475	145	273	290	70
FLT 65	65-100	480	440	270	570	176	355	360	110

All dimensions and weights are approximate.  
Please consult factory for certified dimensions.

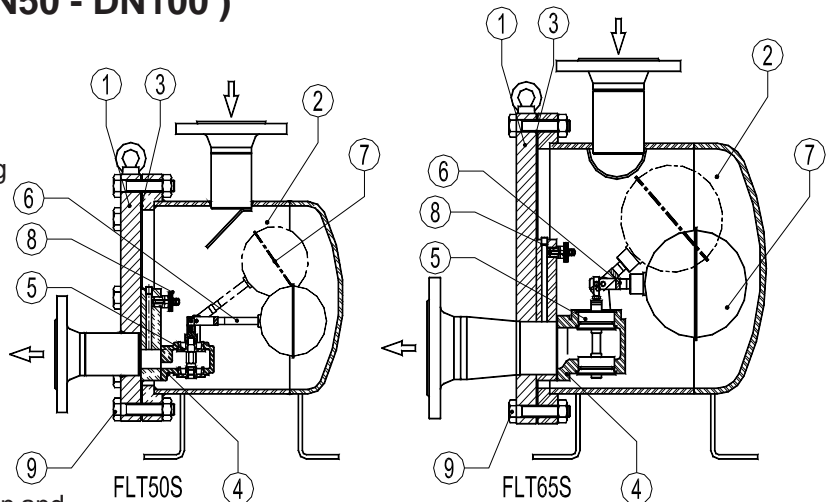
**Alternative connections:**

FLT 50 can be fitted with DN 50-65 connections  
FLT 65 can be fitted with DN 65,80 and DN100 connections

**FLOW RATE CAPACITY IN Kg/h**

MODEL	SIZE	DIFFERENTIAL PRESSURE (bar)													
		0.5	1	1,5	2	2,5	3	3,5	4	5	6	7	8	10	12
FLT50- 12	50	11300	12500	13500	15000	16000	17500	18500	20000	20500	21500	22000	22500	23000	23500
FLT65- 12	65	20000	25000	27500	34000	37000	38000	39500	42000	43500	45500	47000	48000	49500	50000

Recommended safety factor : continuous 1.2 - 1.5 ; discontinuous flow 2 - 3 .



**MATERIALS:**

POS.NR.	DESIGNATION	MATERIAL
1	BODY	St 37-2 / C22.8 / H 11
2	COVER	St 35.8 / P265GH / C 22.8
3 *	GASKET	NON ASBESTOS
4 *	SEAT	AISI 304
5 *	VALVE	AISI 304
6 *	LEVER	AISI 304
7 *	FLOAT	AISI 304
8 *	AIR VENT	STAINLESS STEEL
9	BOLTS	STEEL 8.8

\* AVAILABLE SPARE PARTS

