



STEAM EQUIPMENT

## BIMETALLIC STEAM TRAPS AND AIR ELIMINATORS BSS 20

### DESCRIPTION

BSS 20 all stainless steel construction steam traps and air eliminators are simple and robust traps, specially suited for instrument tracing, line tracing applications and where condensate sensible heat can be recovered.

Specially recommended as air eliminator.

Connections are female screwed or flanged under request.

### MAIN FEATURES

Modulating discharge.

Discharges condensate below steam temperature.

Excellent air discharge.

Operates on superheated steam.

Unaffected by waterhammer and vibrations.

Inner valve performing as a check valve.

Built-in strainer.

OPTIONS: DIN or ANSI flanged connections.

USE: Saturated and superheated steam.

AVAILABLE

MODELS: BSS 20

SIZES: 1/2"

CONNECTIONS: Female screwed ISO 7/1Rp(BS21)

ANSI B2.1 NPT

INSTALLATION: Horizontal or vertical installation.

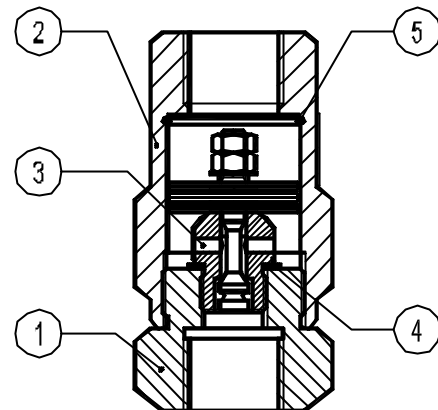
See IMI installation and maintenance instructions.

PMA:Max.allowable pressure 45 bar

TMA:Max.allowable temperature 300 °C

PMO:Max.operating pressure 20 bar

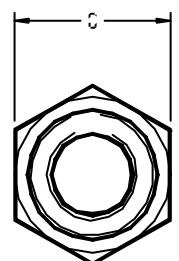
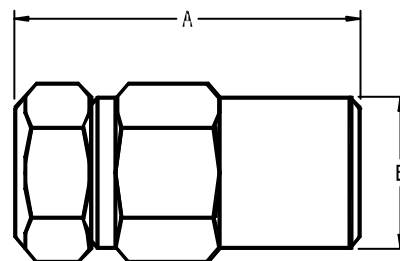
TMO:Max.operating temperature 250 °C



### MATERIALS:

POS.NR.	DESIGNATION	MATERIAL
1	BODY	AISI 304
2	COVER	AISI 304
3 *	VALVE ASSY.	SPECIAL ST.STEEL
4 *	GASKET	AISI 304
5 *	STRAINER SCREEN	AISI 304

\* AVAILABLE SPARE PARTS



How to order: i.e. BSS20 DN 1/2" BSP.

### FLOW RATE CAPACITY IN Kg/h

MODEL	SIZE	DIFFERENTIAL PRESSURE (bar)														
		0.6	0,8	1	1,5	2	3	4	5	6	7	8	10	13	15	20
BSS20	1/2" A	45	60	65	85	100	130	155	170	195	205	220	245	255	270	330
BSS20	1/2" B	150	195	230	285	350	440	490	540	630	650	680	730	820	980	1120

### DIMENSIONS (mm)

SIZE	A	B	C	WEIGHT
DN				Kg
1/2"	80	35	36	0,42

A = Condensate discharge at 20°C below saturation temperature. B = Cold water capacity at about 20°C .



We reserve the right to change the design and material of this product without notice.



AR45

Produced in accordance with Article 3, paragraph 3 of the PED - European Pressure Equipment Directive - 97/23/EC.  
Produzido em conformidade com o Artigo 3º, parágrafo 3 da PED -Directiva Europeia 97/23/EC ( Decreto-Lei 211/99 ) .

IS 1.442 E 01.00