

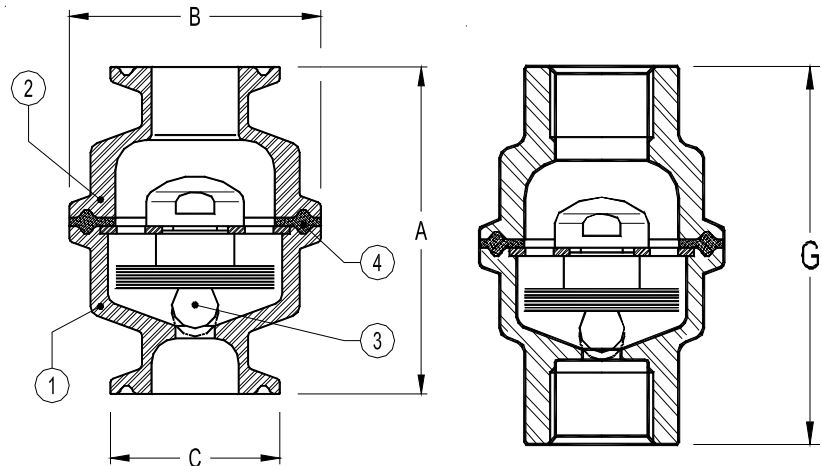
BALANCED PRESSURE THERMOSTATIC STEAM TRAP Clean Steam Trap TSS 6

DESCRIPTION

The TSS 6 all stainless steel thermostatic steam traps and air eliminators are specifically designed for use in reactors, sterilizers and distribution lines in clean and pure steam systems. The small size make it ideal for use with a wide variety of this equipment.

MAIN FEATURES

- Modulating discharge.
- Wide range of connections options
- Excellent air discharge .
- Simple and compact design.
- Wetted parts surface finish of 0,8 micron Ra



Body clamp omitted on this views

OPTIONS: Welded body and different designs under request.

Body surfaces to 0,4 micron Ra
Saturated steam.

USE :

AVAILABLE

MODELS : TSS 6.

SIZES : 1/2", 3/4" and 1"

CONNECTIONS : Tri-clamp compatible
Screwed BSP

INSTALLATION : Vertical installation .
See IMI, installation and maintenance instructions.

PMA : Max. allowable pressure 10 bar

TMA : Max. allowable temperature 177 °C

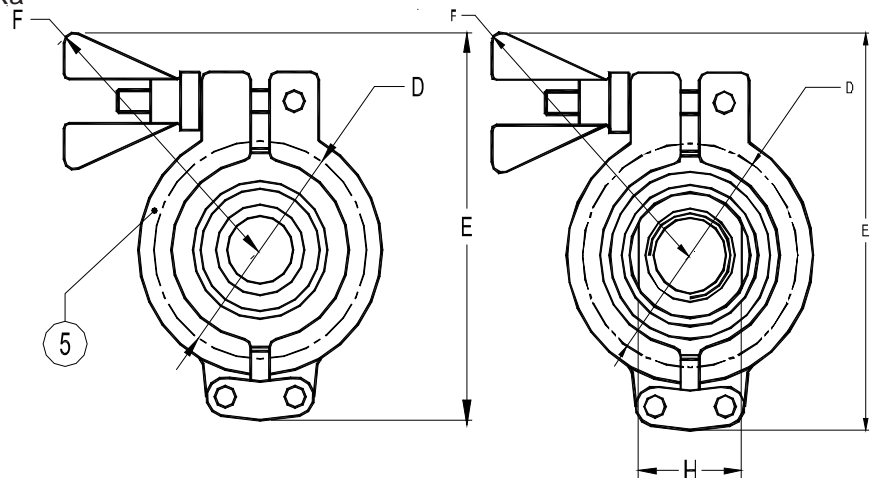
PMO : Max. operating pressure 6 bar

TMO : Max. operating temperature 165 °C

MATERIALS:

POS.NR.	DESIGNATION	MATERIAL
1	BODY	AISI 316L (1.4404)
2	COVER	AISI 316L (1.4404)
3*	THERMOSTATIC ELEMENT	AISI 316L (1.4404)
4*	GASKET	PTFE/TFM® ENVELOPE GASKET **
5	CLAMP	AISI 316 (1.4401)

* AVAILABLE SPARE PARTS ** FDAAPPROVED



SIZE	DIMENSIONS (mm)								WEIGHT Kg
	A	B	C	D	E	F	G	H	
DN									
1/2"	65	50,5	25	50	93	77	74	27	0,7
3/4"	65	50,5	34	50	93	77	81	36	0,7
1"	65	50,5	50,5	50	93	77	95	40	0,8

FLOW RATE CAPACITY IN Kg/h

MODEL	SIZE	DIFFERENTIAL PRESSURE (bar)									
		0.2	0.3	0.5	1	1.5	2	3	4	6	
TSS 6	1/2" - 1"	90	135	200	400	500	700	900	1000	1400	

Capacities shown refer to condensate at 5°C below saturated steam temperature .

Capacities for cold condensate discharge at 20°C are around two times greater .

Recommended safety factor : 2