

## COMPRESSED AIR BALL FLOAT TRAPS FA 20 ( Carbon Steel )

**DESCRIPTION**

FA20 series compressed air float traps are specially design for draining water from high pressure compressed air and gas lines.

Applications on aftercoolers, separators and compressed air and gas mains.

An air balance pipe must be fitted allowing the air trapped in the trap body to escape, avoiding obstructing of condensate flow.

Connections are female screwed.

**MAIN FEATURES**

Modulating discharge.

Unaffected by sudden or wide load and pressure changes .

**OPTIONS:** Internal strainer (only on horizontal models).  
Equalizing and drain plug on body .  
Lifting lever.

**USE:** Compressed air and non corrosive gas compatible with the construction.

**AVAILABLE**

**MODELS:** FA 20-21.

**SIZES:** 1/2" - 1" , DN 15 - DN 25.

**CONNECTIONS:** Female screwed ISO 7/1Rp(BS21)  
Flanged DIN.Special flanges upon request.

**INSTALLATION:** Horizontal or vertical installation .  
See IMI, installation and maintenance instructions.

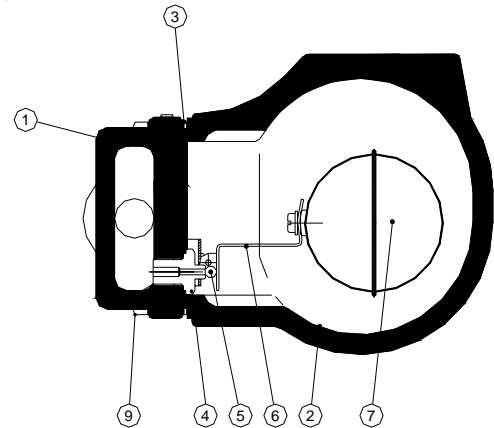
PMA:Max.allowable pressure 40 bar

TMA:Max.allowable temperature 400 °C

PMO:Max.operating pressure 32 bar

TMO:Max.operating temperature 200 °C

How to order: i.e. FA 20-21 DN 1/2" BSP

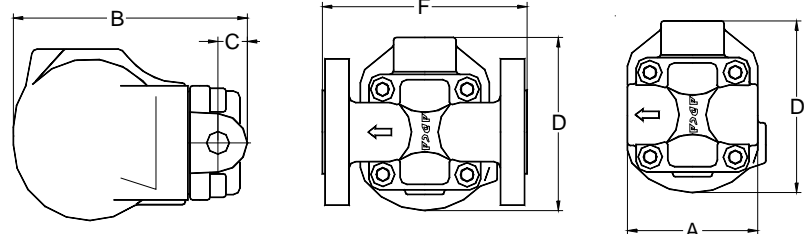

**MATERIALS:**

POS.NR.	DESIGNATION	MATERIAL
1	BODY	GS - C25
2	COVER	GS - C25
3 *	GASKET	NON ASBESTOS
4 *	SEAT	STAINLESS STEEL
5 *	VALVE	VITON
6 *	LEVER	AISI 304
7 *	FLOAT	AISI 304
9	BOLTS	STEEL 8.8

\* AVAILABLE SPARE PARTS

**DIMENSIONS (mm)**

SIZE	Screwed Ends				WEIGHT	DIN Flanges	
	A	B	C	D		F	WEIGHT
DN					Kg		Kg
1/2"	95	178	23	128	5,2	150	6,7
3/4"	95	178	23	128	5,2	150	7,2
1"	95	178	23	128	5,2	160	7,7


**FLOW RATE CAPACITY IN Kg/h**

MODEL	SIZE	DIFFERENTIAL PRESSURE (bar)														
		0.5	1	1,5	2	3	4,5	6	7	8	9	10	12	14	16	21
FA20-21	1/2"- 1"	75	100	125	155	180	220	255	275	290	305	320	345	375	420	480

**APPLICATION LIMITS**  
Max.differential pressure  
FA 20-21 - 21 bar