

## AIR ELIMINATORS FOR WATER SYSTEMS AE 17/G (1/2" - 3/4")

### DESCRIPTION

The AE17/G air eliminator removes air from HVAC systems and cold and hot water industrial installations. This mechanical device can be used in combination with other air elimination and separation systems or directly applied at high points in the piping systems.

Connections are female screwed vertical.

### MAIN FEATURES

Corrosion-resistant working parts.

Replaceable internal parts.

USE : Cold and hot water systems.

### AVAILABLE

MODELS : AE 17/G

SIZES : 1/2" and 3/4".

CONNECTIONS : Female screwed ISO 7/1 Rp (BS21)

INSTALLATION : Vertical installation.

See IMI installation and maintenance instructions.

PMA :Max.allowable pressure 16 bar

TMA: Max.allowable temperature 250 °C

PMO: Max.operating pressure 14 bar

TMO: Max.operating temperature 200 °C

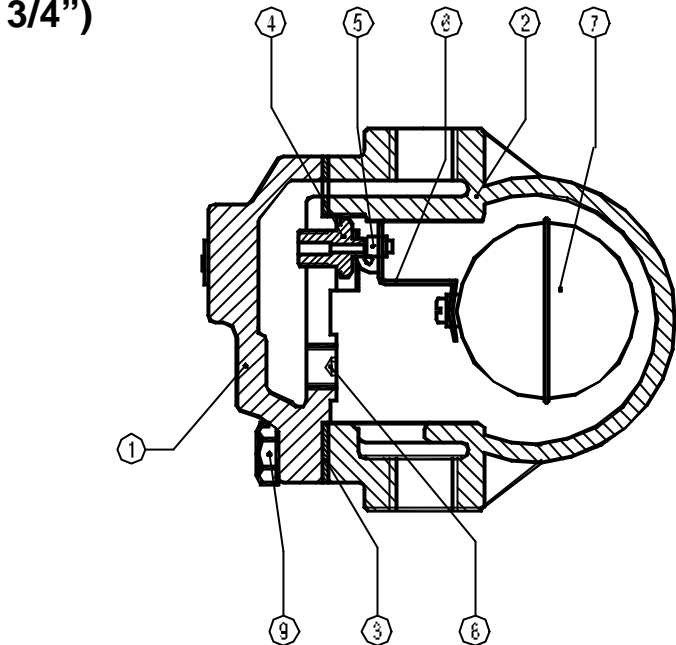
### APPLICATION LIMITS :

Minimum liquid specific weight : 0.75 Kg/dm<sup>3</sup>

Max.differential pressure: 14 bar

How to order: i.e. AE17/G DN 3/4" BSP.

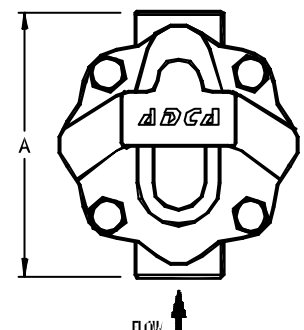
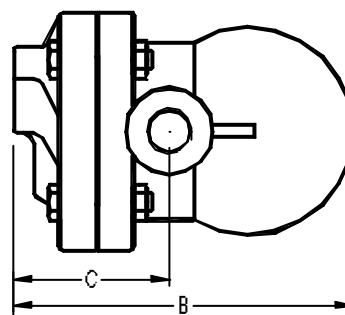
DIMENSIONS (mm)					
SIZE	A	B	C	D	WEIGHT
DN	Kg				
1/2"	122	150	68	108	3,5
3/4"	122	150	68	108	3,5



### MATERIALS:

POS.NR.	DESIGNATION	MATERIAL
1	BODY	GGG40
2	COVER	GGG40
3 *	GASKET	NON ASBESTOS
4 *	SEAT	AISI 410
5 *	VALVE	AISI 410
6 *	LEVER	AISI 304
7 *	FLOAT	AISI 304
8	PLUG	STAINLESS STEEL
9	BOLTS	STEEL 8.8

\* AVAILABLE SPARE PARTS



### FLOW RATE CAPACITY IN N l / min

MODEL	SIZE	DIFFERENTIAL PRESSURE (bar)												
		0.5	1	1,5	2	3	4	6	8	9	10	12	13	16
AE 17/G	1/2"-3/4"	45	65	75	95	125	165	225	290	320	365	425	445	565

Capacities at a standard atmospheric pressure of 1bar and 20°C.

If the temperature differs from 15°C, the discharge capacity can be corrected by multiplying it by:  $\frac{288}{273 + T}$ , where T is the actual temperature in °C.