

## AIR ELIMINATORS FOR WATER SYSTEMS AE 16 (Cast Iron) - AE 16 SS (St.Steel)

### DESCRIPTION

The AE16 (cast iron) and AE16SS (st.steel) air eliminator removes air from HVAC systems and is also suitable for non corrosive and/or dangerous liquids providing that their specific gravity is not less than 0,75 Kg/dm<sup>3</sup>.

This ball float type automatic air eliminator can be used in combination with other air elimination and separation systems or directly applied at high points in the piping.

Connections are female screwed.

### MAIN FEATURES

Corrosion-resistant working parts.

AE16 - Replaceable internal parts.

AE16SS - Externally replaceable seat.

USE: Cold and hot water systems.

AVAILABLE: AE16/6 ; AE16

MODELS: AE16SS

SIZES: AE16 - 1/2" and 3/4".  
AE16SS - 1/2" and 3/4".

CONNECTIONS: Inlet 1/2" or 3/4" vertical.  
Outlet 1/2" vertical.

Female screwed ISO 7/1Rp(BS21)

INSTALLATION: Vertical installation. It must be installed absolutely vertically at the points in the plant where the air tends to collect. The drain should be piped to a safe position. See IMI installation and maintenance instructions.

PMA:Max.allowable pressure 16 bar

TMA:Max.allowable temperature 250 °C

PMO:Max.operating pressure 14 bar

TMO:Max.operating temperature 200 °C

How to order: i.e. AE16/6 DN 3/4" BSP.

### FLOW RATE CAPACITY IN N l/min

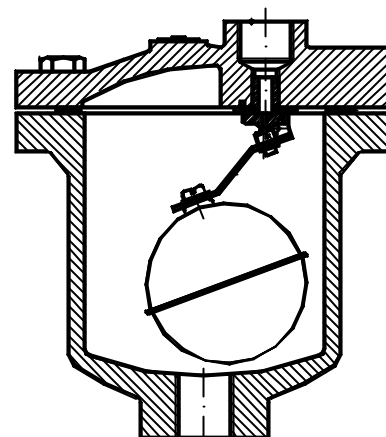
MODEL	SIZE	DIFFERENTIAL PRESSURE (bar)														
		0.5	1	2	3	4	5	6	7	8	10	12	13	14	15	16
AE 16/6	1/2"-3/4"	75	95	140	185	245	265	330								
AE 16	1/2"-3/4"	45	65	95	125	165	185	225	263	290	365	425	445	475	500	565

Capacities at a standard atmospheric pressure of 1bar and 20°C.

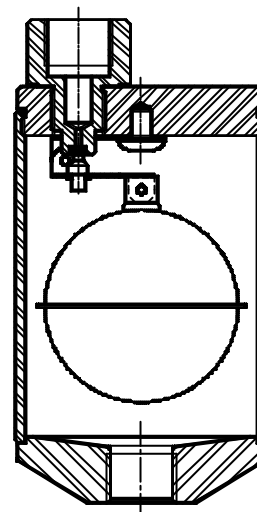
If the temperature differs from 15°C, the discharge capacity can be corrected by multiplying it by:  $\frac{288}{273 + T}$ , where T is the actual temperature in °C.

**VALSTEAM ADCA**

We reserve the right to change the design and material of this product without notice.



AE16



AE16SS - ST.STEEL

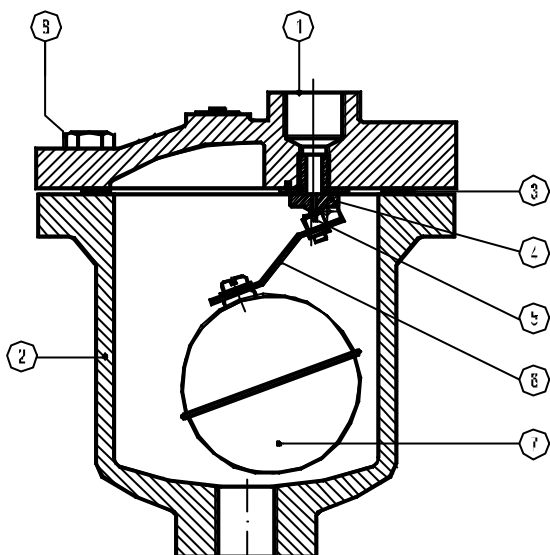
### APPLICATION LIMITS

Minimum liquid specific weight : 0.75 Kg/dm<sup>3</sup>

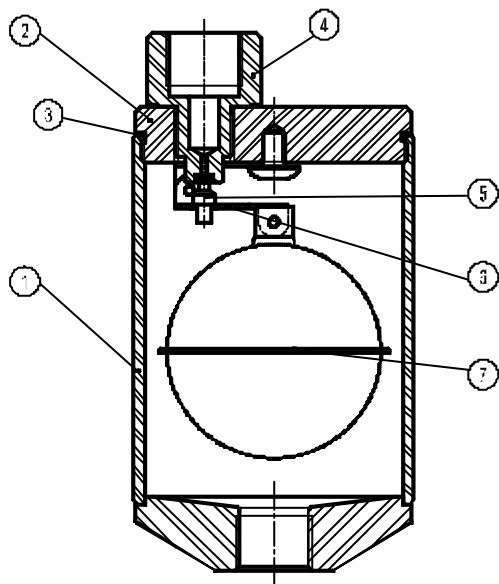
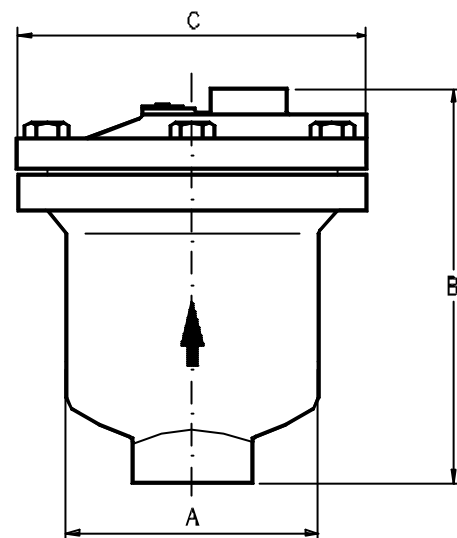
AE16/6 - Max.working pressure 6 bar

AE16 - Max.working pressure 16 bar

AE16SS- Max.working pressure 12 bar


**AE16**
**AE16 - DIMENSIONS (mm)**

SIZE	A	B	C	WEIGHT
DN				Kg
1/2"	100	150	140	4
3/4"	100	150	140	4


**AE16SS**
**AE16SS-DIMENSIONS (mm)**

SIZE	A	B	WEIGHT
DN			Kg
1/2"	76	143	1.6
3/4"	76	143	1.6

**MATERIALS - AE16 :**

POS.NR.	DESIGNATION	MATERIAL
1	BODY	GGG40
2	COVER	GGG40
3 *	GASKET	NON ASBESTOS
4 *	SEAT	AISI 410
5 *	VALVE	VITON
6 *	LEVER	AISI 304
7 *	FLOAT	AISI 304
8 *	BOLTS	STEEL 8.8

\* AVAILABLE SPARE PARTS

**MATERIALS - AE16SS :**

POS.NR.	DESIGNATION	MATERIAL
1	BODY	AISI 304
2	COVER	AISI 304
3 *	O-RING	NBR
4 *	SEAT	a) AISI 316
5 *	VALVE	a) VITON
6 *	LEVER	AISI 304
7 *	FLOAT	AISI 304

\* AVAILABLE SPARE PARTS

a) In alternative can be supplied with stainless steel valve and soft seat

