

## DOUBLE WINDOW SIGHT GLASS DW 12

### DESCRIPTION

For monitoring the right operation of a steam trap to avoid leakage of live steam and consequently big energy losses, a sight glass is recommended to be installed downstream the steam trap. Double window DW sight glass, has been designed for this particular application.

Connections are female screwed.

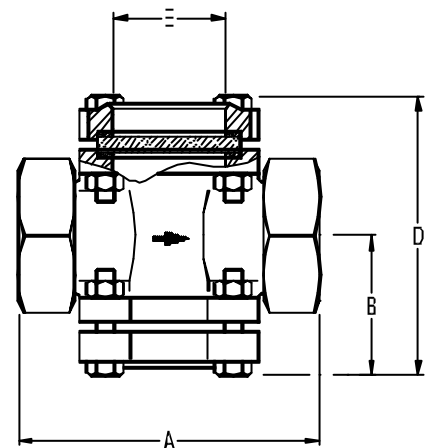
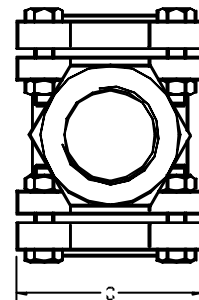
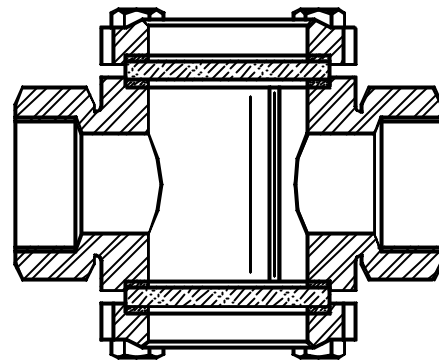
OPTIONS: Borosilicate glass against extra price.  
 USE : Condensate pipes downstream steam traps.  
 AVAILABLE MODELS : DW 12 - Bronze body.

SIZES : DW12 - 1 1/4", 1 1/2" and 2".

CONNECTIONS : DW12 - Female screwed ISO 7/1 Rp (BS21)

INSTALLATION : Horizontal or vertical installation .  
 See IMI installation and maintenance instructions.

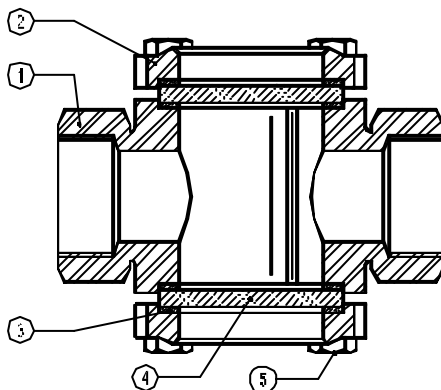
RATING : PN16



Window Material	Borosilicate Glass	Tempered Glass
Max. Operating Temp.	300 °C	120 °C
Min. Operating Temp.	-10 °C	-10 °C

### DIMENSIONS (mm)

SIZE DN	A	B	C	D	E	WEIGHT (Kg)
1 1/4"	125	55	83	109	50	2,47
1 1/2"	135	57	83	113	50	2,80
2"	170	70	104	139	60	4,97



### MATERIALS

POS.NR.	DESIGNATION	MATERIAL	SPARE PARTS
1	BODY	BRONZE	
2	COVER	BRONZE	*
3	GASKET	CAF	*
4	WINDOW	TEMPERED GLASS	*
		BOROSILICATE GLASS **	*
5	BOLTS	STEEL 8,8	

\* AVAILABLE SPARE PARTS

\*\* OPTION