

DOUBLE WINDOW SIGHT GLASS DW 12G - DW 12SS

DESCRIPTION

For monitoring the right operation of a steam trap to avoid leakage of live steam and consequently big energy losses, a sight glass is recommended to be installed downstream the steam trap. Double window DW sight glass, has been designed for this particular application.

Connections are female screwed.

OPTIONS: Borosilicate glass against extra price.
 USE : Condensate pipes downstream steam traps.
 AVAILABLE MODELS : DW 12G - GG25.
 DW 12SS - AISI 316.

SIZES : DW12G/SS - DN15 to DN150.

CONNECTIONS : DW12G/SS - DIN flanges

INSTALLATION : Horizontal or vertical installation .
 See IMI installation and maintenance instructions.

RATING: PN16

DIMENSIONS (mm)

SIZE DN	A	D	E	WEIGHT (Kg)	
				Cast Iron	Steel
15	130	95	44	3,00	3,00
20	150	105	44	3,50	4,00
25	160	115	44	4,00	5,00
32	180	140	50	6,00	6,50
40	200	150	50	6,50	7,30
50	230	165	60	9,00	10,50
65	290	185	90	17,00	17,00
80	310	200	90	18,00	20,00
100	350	220	110	23,00	26,50
125	400	250	142	50,00	52,00
150	480	285	160	63,00	68,00

GROUP 2 (Steam and Water)		
MODEL	SIZES	CATEGORY
DW12G/DW12SS	DN 15 - 50	SEP
DW12G/DW12SS	DN 65 - 150	1

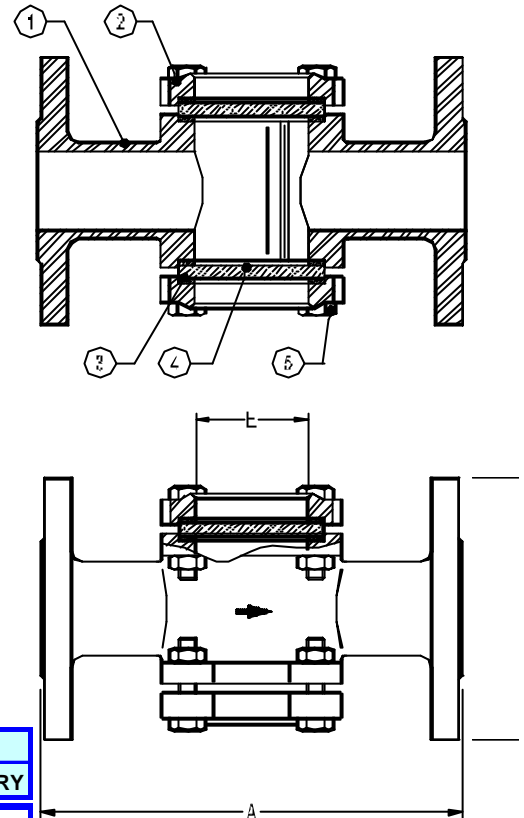
Window Material	Borosilicate Glass	Tempered Glass
Max. Operating Temp.	300 °C	120 °C
Min. Operating Temp.	-10 °C	-10 °C

MATERIALS

POS.NR.	DESIGNATION	DW 12G MATERIAL	DW 12SS MATERIAL	SPARE PARTS
1	BODY	BRONZE	AISI 316	
2	COVER	BRONZE	AISI 316	*
3	GASKET	CAF	CAF	*
4	WINDOW	TEMPERED GLASS	TEMPERED GLASS	*
		BOROSILICATE GLASS **	BOROSILICATE GLASS **	*
5	BOLTS	STEEL 8,8	STEEL 8,8	

* AVAILABLE SPARE PARTS

** OPTION



CE Marking :This product have been designed for use on water and steam wich are in Group 2 of the PED - European Pressure Equipment Directive 97/23/EC and it comply with those requirements.The product carries the CE mark when falling in category 1 and above.