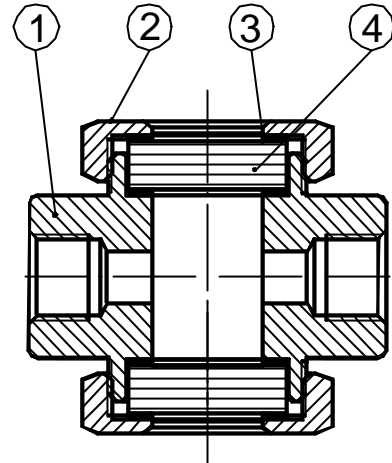


DOUBLE WINDOW SIGHT GLASS DW 40 S

DESCRIPTION

For monitoring the right operation of a steam trap to avoid leakage of live steam and consequently big energy losses, a sight glass is recommended to be installed downstream the steam trap. Double window DW sight glass, has been designed for this particular application.

Connections are female screwed or flanged .



OPTIONS: Different glasses and design on request.

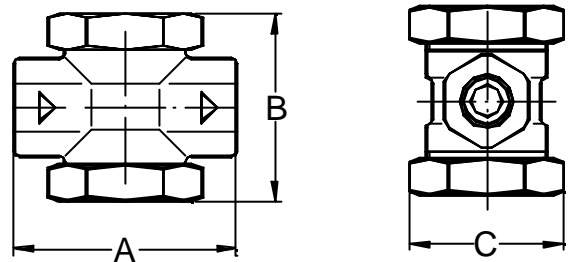
USE: Condensate pipes downstream steam traps.

AVAILABLE

MODELS: DW 40 S - double window borosilicate glass.

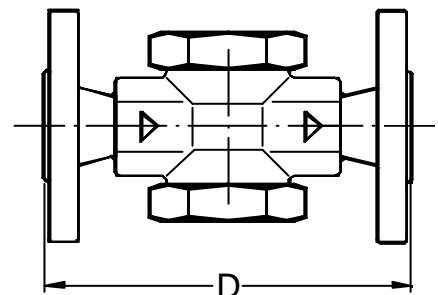
SIZES: 1/2" to DN 1" - DN15 to DN25.
1 1/2" and 2" on request.

CONNECTIONS: Female screwed ISO 7/1Rp(BS21).
NPT (ANSI B1.20.1).
Flanged DIN or ANSI (welded flanges).
Special flanges upon request.



INSTALLATION: Horizontal or vertical installation .
See IMI installations and maintenance instructions.

PMO:Max.operating pressure 40 bar
TMO:Max.operating temperature 300 °C



How to order: i.e.DW 40 S DN 25 DIN.

MATERIALS

POS. NR	DESIGNATION	MATERIAL
1	BODY	C 22.8
2	COVER	C 22.8
3 *	GASKET	NON ASBESTOS
4 *	GLASS	BOROSILICATE

* AVAILABLE SPARE PARTS

DIMENSIONS (mm)

SIZE	SCREWED ENDS			DIN FLANGES	
	A	B	C	WEIGHT	D WEIGHT
DN				Kg	Kg
1/2"	90	80	60	1.25	130 2.8
3/4"	90	80	60	1.25	150 3.4
1"	100	87	65	2.1	160 4,7