

## PACKAGED ADCAMAT AUTOMATIC PUMP

(SUITABLE FOR STEAM SUPPLY)

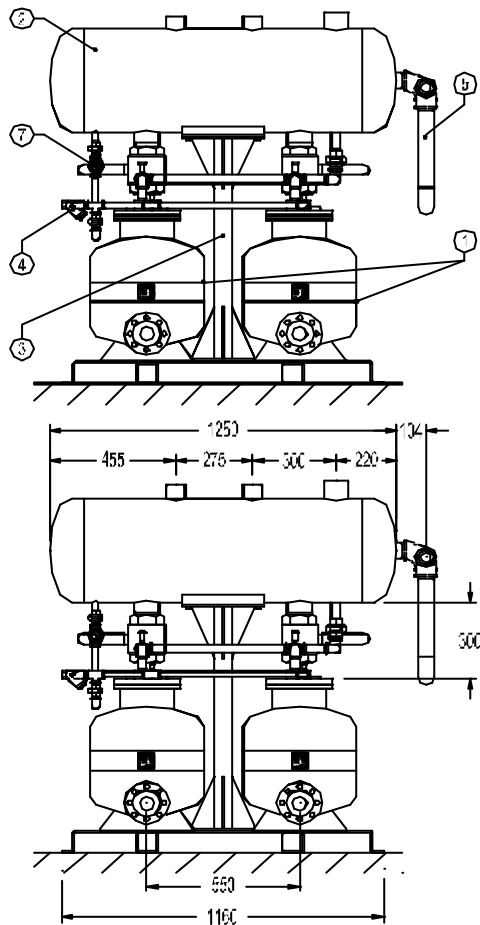
### POPK-SD ( Duplex ) & POPK-ST ( Triplex )

#### DESCRIPTION

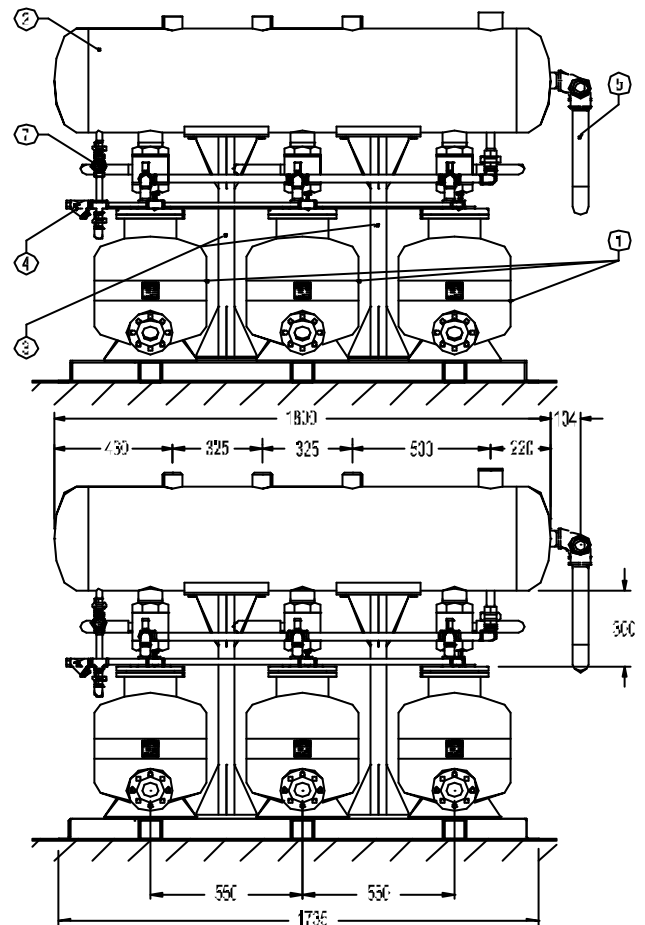
A POPK-SD (Duplex) and POPK-ST (Triplex) packaged units comprises two or three Adcamat pumps in parallel ,a vented receiver and all auxiliary items, compactly mounted on a metal frame piped and ready for connetion.

For operating conditions and pumping capacity, please refer to information sheet IS 9.101 E and IS 9.105 E.

Duplex

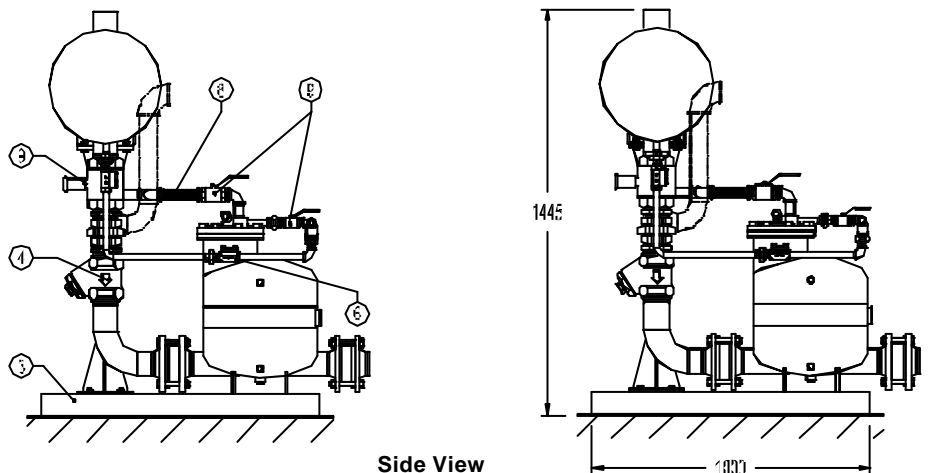


Triplex



#### MATERIALS:

POS.NR.	DESIGNATION	MATERIAL
1	PUMP	FAB.STEEL
2	RECEIVER	FAB.STEEL
3	METAL FRAME	STEEL
4	IS 16 STRAINER	GG 25
5	OVERFLOW	STEEL PIPE
6	TH21 STEAM TRAP	C 22.8
7	SW12 SIGH GLASS	BRASS
8	FLEXIBLE HOSE	ST.STEEL
9	BALL VALVES	STEEL



Side View