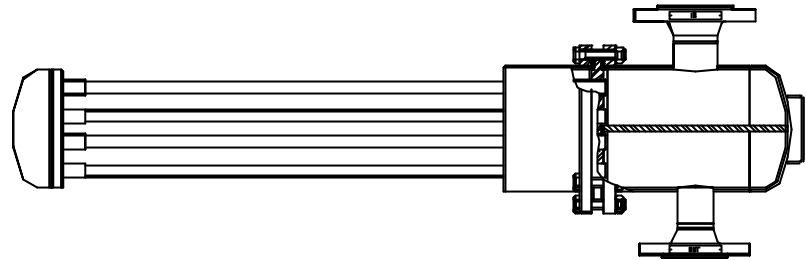
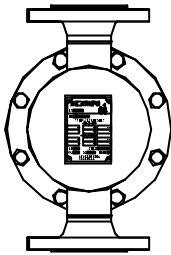




STEAM EQUIPMENT

## ADCATHERM - R Series TUBULAR HEATING COILS ( Steam to water )



### DESCRIPTION

The ADCA-R series steam to water tubular heating coils are shorter and lighter than the alternative tubular heating coils manufactured with smooth pipes. The use of extruded low fin tube, has the advantage that it can improve the external surface and thermal performance.

### MAIN FEATURES

Corrosion-resistant stainless steel low finned tube bundle construction.

Straight tubes for easy cleaning .

Floating head at the end of the tube bundle, avoiding tube stresses caused by thermal expansion and contraction.

OPTIONS : Special designs.

USE : Steam, water, hot condensate and other fluids compatible with the construction.

### AVAILABLE

MODELS : R5, R6, R8 and R10

CONNECTIONS : Flanged or screwed , according to DIN or ANSI standards.

INSTALLATION : Horizontally on vertical or horizontal vessels.  
Steam runs inside the tubes and process water outside.

### ORDER

REQUIREMENTS : Ask for information sheet IS R.21

### LIMITING CONDITIONS

RATING	PRESS. bar	TEMP. °C
DIN PN16	16	120
	a)14 13	198 250
ANSI CL.150	16	120
	a)14	198

a) PMO - Maximum operating pressure for saturated steam .

Minimum operating temperature: -10°C  
Design code: AD-Merkblatt .

### MATERIALS :

DESCRIPTION	MATERIAL
Tube bundle	AISI 316L
Tubesheets	AISI 316
Heads	RSt 37-2 / St 35.8 / P265GH
Inlet/Outlet pipes	St 35.8 (DIN 17175 )
DIN flanges	DIN 17243 / C22.8
ANSI flanges	ASTM A 105
Sockets	ASTM A 105
Suports	RSt 37-2

EN10204 3.1B certificate available if requested with the order.

### CE Marking :

This product have been designed for use on water and steam which are in Group 2 of the PED-European Pressure Equipment Directive 97/23/EC and it comply with those requirements.

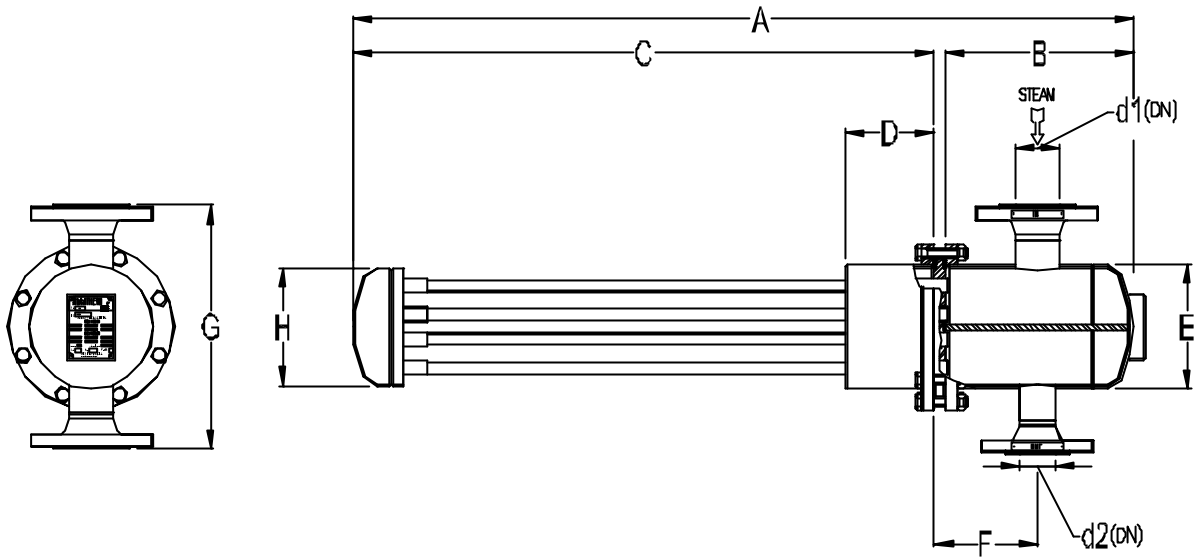
The product carry the CE mark .

### GROUP 2 GASES CATEGORIES

RATING	MODEL	CATEGORY
DIN PN 16	R5.075 to R5.150	1
	R6.075 to R6.150	1
	R8.075 to R8.150	2
	R10.075 to R10.150	2

**VALSTEAM ADCA**





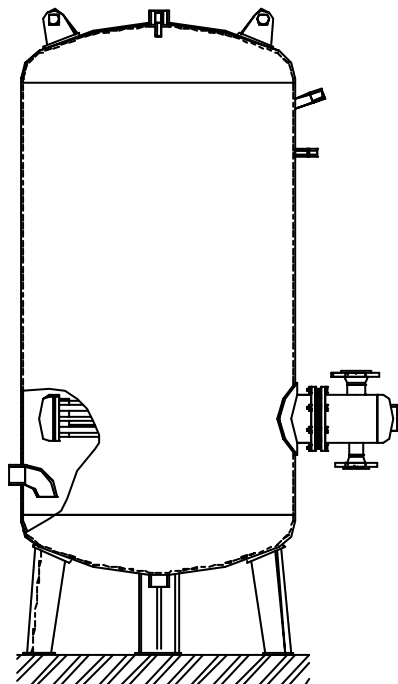
MODEL	Weight Kgs	DIMENSIONS										PIPE CONNECTIONS					
		A	B	C	D	E	F	G	H	I	J	d1	d2	d3	d4	d5	d6
R5.075	--	1010	234	762	120	139	145	340	128	--	--	40	25	--	--	--	--
R5.100	--	1260	234	1012	120	139	145	340	128	--	--	40	25	--	--	--	--
R5.150	--	1760	234	1512	120	139	145	340	128	--	--	40	25	--	--	--	--
R6.075	--	1040	254	770	120	168	145	368	157	--	--	65	40	--	--	--	--
R6.100	--	1290	254	1020	120	168	145	368	157	--	--	65	40	--	--	--	--
R6.150	--	1790	254	1520	120	168	145	368	157	--	--	65	40	--	--	--	--
R8.075	--	1060	264	780	130	220	145	420	204	--	--	80	50	--	--	--	--
R8.100	--	1310	264	1030	130	220	145	420	204	--	--	80	50	--	--	--	--
R8.150	--	1810	264	1530	130	220	145	420	204	--	--	80	50	--	--	--	--
R10.075	--	1097	304	775	130	273	145	473	257	--	--	80	50	--	--	--	--
R10.100	--	1347	304	1025	130	273	145	473	257	--	--	80	50	--	--	--	--
R10.150	--	1847	304	1525	130	273	145	473	257	--	--	80	50	--	--	--	--

Ø d1 and d2 connections sized according with the flow conditions.

Dimensions subject to change without notice .

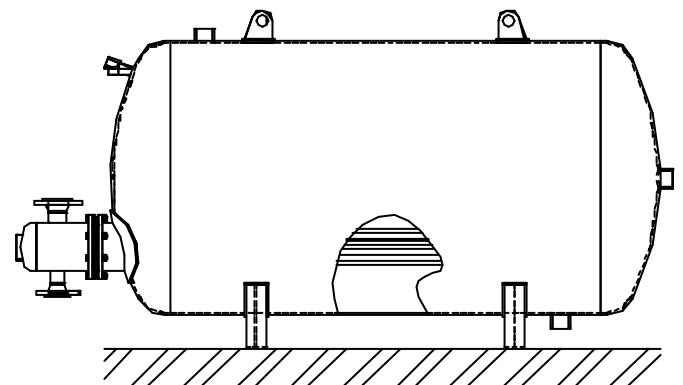
Since each coil is built to suit specific plant requirements please consult factory for certified dimensions .

Other sizes and designs can be supplied under request .



Vertical Vessel

TYPICAL INSTALLATION



Horizontal Vessel